

PocketCRON For Windows Mobile



Handheld mobile automation has never been easier

User Guide

(April 2009)



Copyright © 2009 Applied PDA Software, Inc.
All rights reserved.

Table of Contents

- INTRODUCTION3**
- GETTING HELP.....4**
 - USER GUIDE4
 - CONTACTING TECHNICAL SUPPORT4
- GETTING STARTED.....5**
 - TASK STATUS5
 - ADDING A NEW TASK.....6
 - EDITING A TASK.....9
- MAIN SETTINGS10**
- TECHNICAL SPECIFICATIONS12**
 - SUPPORTED OPERATING SYSTEMS.....12
 - SUPPORTED PDA PROCESSORS12
 - SUPPORTED DISPLAYS.....12
- ACKNOWLEDGEMENTS13**



Introduction

PocketCRON

Thank you for purchasing PocketCRON.

PocketCRON is a very easy and intuitive program scheduler that has the ability to convert a normal PDA into a powerful stand-alone automation controller.

For example if you would like to run a specific program that starts your PC in the morning at a certain time through Wake-on-Lan (WoL), a connected Windows Mobile device running PocketCRON can help to achieve that.

When PocketCRON is partnered with PocketDAQ Pro, it can become a useful home automation unit.

Although simple to use, we do recommend that you read this manual carefully to ensure that you are familiar with all of its features and capabilities.



Copyright © 2009 Applied PDA Software, Inc.
All rights reserved.

Getting Help

User Guide

You should have received this User Guide document with your software. It is also available for download at www.AppliedPDA.com. The online version of this User Guide is always the most up-to-date version of this document.

Contacting Technical Support

Applied PDA Software is well known for its outstanding technical support. If you have read this User Guide and still have questions, comments, or any suggestions, please contact our support department at support@appliedpda.com.



Copyright © 2009 Applied PDA Software, Inc.
All rights reserved.

Getting Started



Task Status

Running

The task item signals a running state when it turns **green**. Only an active scheduled task, that is not suspended, will reflect this condition. When its scheduled time passes, the green colour will disappear, reverting to black again.

Active

An active task item is one which is scheduled to run and waiting for its specific time.

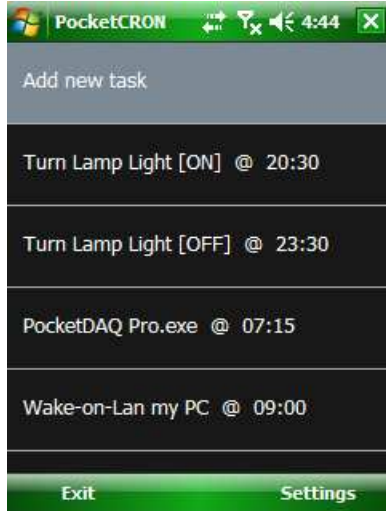
Suspended

A suspended task item is one which is inactive and will *not* be scheduled to run. It can still be executed manually.



Copyright © 2009 Applied PDA Software, Inc.
All rights reserved.

Adding a New Task



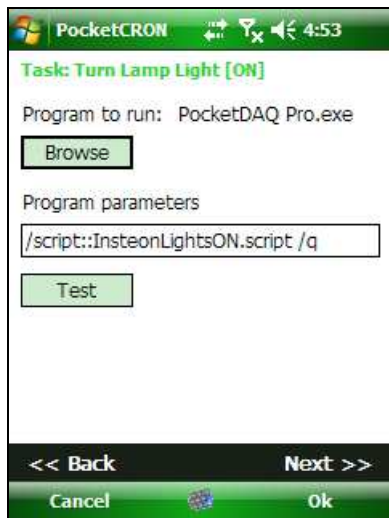
The following will detail each available feature during the creation of a new task.

Task Name



The **Task name** is an input area for entering a description that explains what operation will be performed.

Program Settings

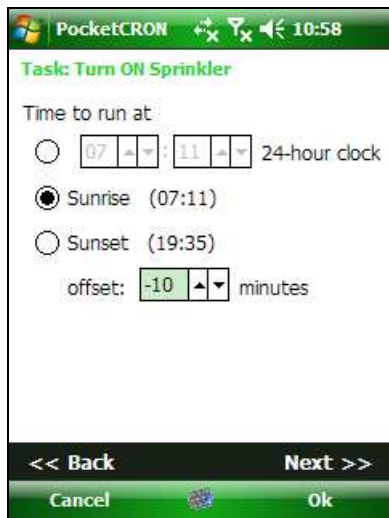


Using the **Browse** button, the user can select the executable program to run as this task.

The **Program parameters** input area enables any additional command line options to be included that the specified program might use.



Task Time

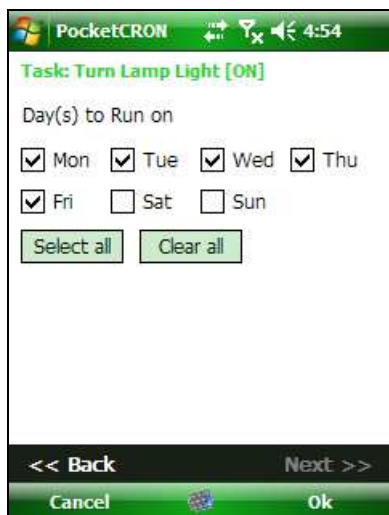


The user has three (3) options when configuring the schedule time for the task.

- (a) *Fixed Time* is specific and unchanging.
- (b) *Sunrise Time* follows the solar calendar and adjusts itself automatically to the user's specified location on the planet.
- (c) *Sunset Time* operates in the same manner as Sunrise.

The adjustable **offset** feature applies only to the Sunrise and Sunset times and has a range of -60 to +60 minutes. This is useful to be able to more precisely target the timing of tasks around Sunset/Sunrise.

Day(s) to run on



Here the user selects the days of the week the current task will execute on. If no days are specified, the task simply becomes inactive in a suspended state and will not run.



Copyright © 2009 Applied PDA Software, Inc.
All rights reserved.

Editing a Task



When editing an existing task, an initial screen is presented that enables additional operations.

Run now

Simply executes the current task *now*.

Copy task

When the first task is created, usually the following additional tasks require similar parameters as the first one. To simplify the process, the **Copy task** feature will duplicate the current task item and append it to the list at the end. By default, the newly copied task will be in a suspended state.

Suspend task

Toggles the current task to an inactive state.

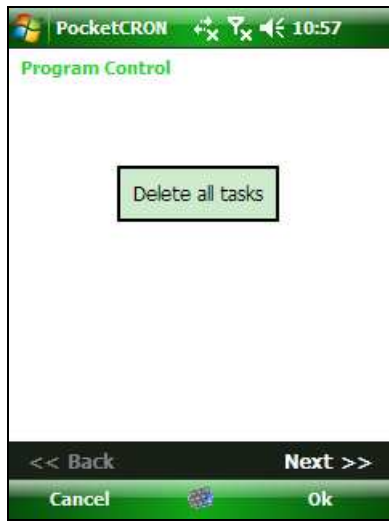
Delete task

Permanently removes the current task from the list.



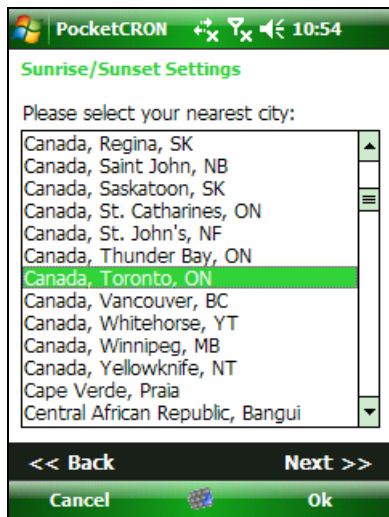
Main Settings

Program Control



If by chance the user would like to remove all of the current tasks, the **Delete all tasks** button simplifies this process, versus removing each task manually.

Sunrise/Sunset Settings



The sunrise and sunset solar timing requires position data of where on the planet the device running PocketCRON is located. It is important that the user selects the closest city to their location, so that accurate sunrise and sunset times take effect.

Important

It is highly recommended to configure this setting *first, before* adding or editing tasks. Also please ensure that the PDA has the correct time, date, and time zone.



Copyright © 2009 Applied PDA Software, Inc.
All rights reserved.

About...



Release version information and copyright notice.



Copyright © 2009 Applied PDA Software, Inc.
All rights reserved.

Technical Specifications

Supported Operating Systems

Windows Mobile 2003/SE

Windows Mobile 5.0

Windows Mobile 6.0/6.1

Supported PDA Processors

Any ARM/XSCALE compatible CPU

Supported Displays

All

(Portrait and Landscape modes)



Copyright © 2009 Applied PDA Software, Inc.
All rights reserved.

Acknowledgements

The following is a list of people who deserve much acclaim in regards to their various support with helping make Applied PDA Software possible.

John Farkas and Monika Wydra

For documentation review and critical feedback. 😊

Final Word...

If you have any questions, please [contact us](#). Your feedback is the single most important driver behind new features and improvements in our products.

Thank you for your support.



Copyright © 2009 Applied PDA Software, Inc.
All rights reserved.